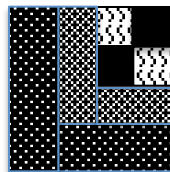


2014 Mystery Quilt

Part 2

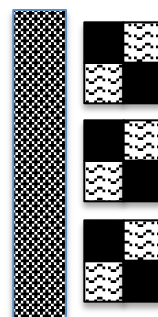
Unit 2 – Cabin Blocks



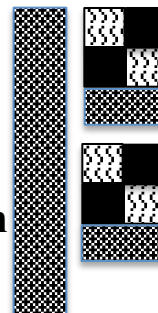
Make 18

Step 1: Cut (5) 2 ½ “ strips from the **medium** fabric.
Cut (8) 2 ½” strips from the **medium dark** fabric.
Cut (10) 2 ½” strips from the **dark** fabric.

Step 2: Use the **medium light/black** Four Patch units from part 1. Position the four patch units as shown and chain stitch to the **medium** strips. Cut apart. Press toward **medium** fabric.

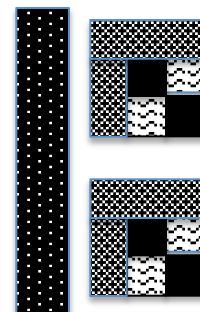


Step 3: Position units from Step 2 as shown and chain stitch to the rest of the **medium** strips. Cut apart. Press toward **medium** fabric.



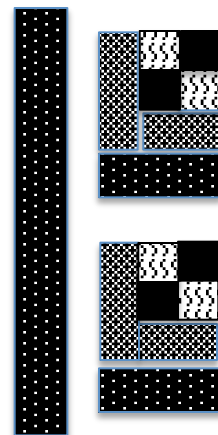
Step 4: Square up to 6 ½” x 6 ½”.

Step 5: Position units from Step 4 as shown and chain stitch to the **medium dark** strips. Cut apart. Press toward **medium dark** fabric.



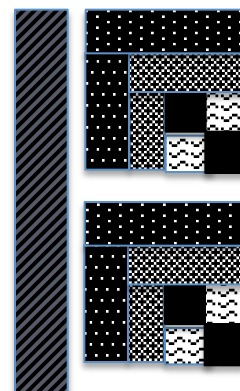
Mystery Quilt Part 2, Unit 2

Step 6: Position units from Step 5 as shown and chair stitch to the rest of the **medium dark** strips. Cut apart. Press toward **medium dark** fabric.

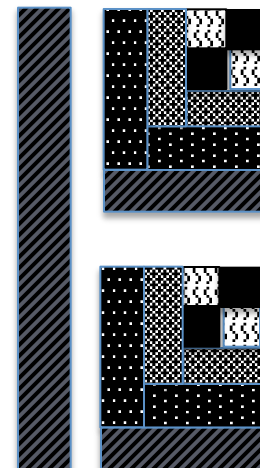


Step 7: Square up to $8\frac{1}{2}'' \times 8\frac{1}{2}''$.

Step 8: Position units from Step 7 as shown and chain stitch to the **dark** strips. Cut apart. Press toward **dark** fabric.



Step 9: Position units from Step 8 as shown and chain stitch to the rest of the **dark** strips. Cut apart. Press toward **dark** fabric.



Step 10: Square to $10\frac{1}{2}'' \times 10\frac{1}{2}''$.